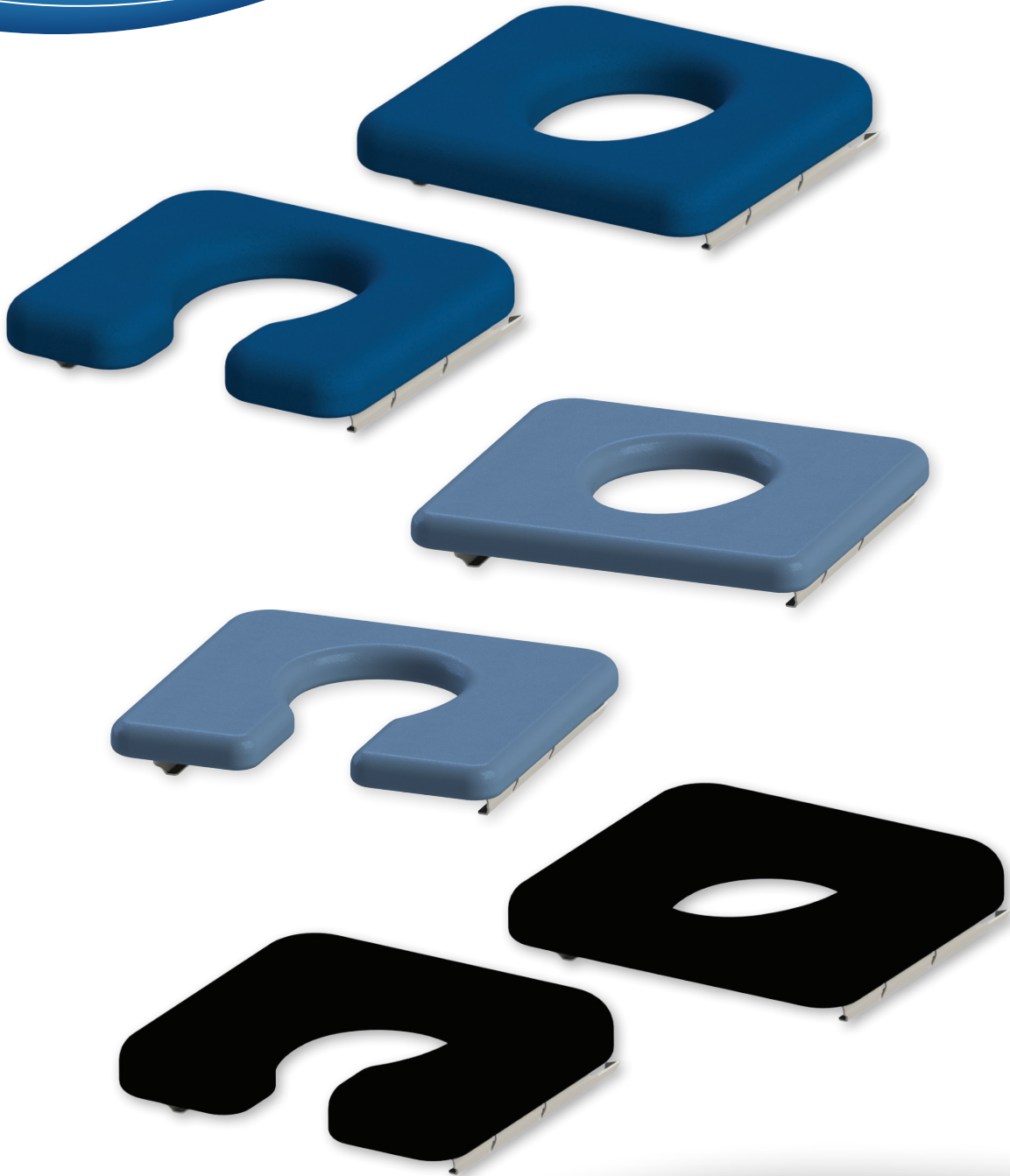


# Shower Commode Seat Options

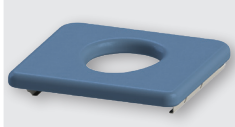


**4Healthcare**



## Shower Commode Seat Options

### Polyurethane

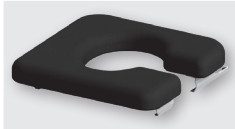


**Commode Seat  
Polyurethane - Blue Closed  
Front**  
Width 470mm  
4H411SCPU



**Commode Seat  
Polyurethane - Blue Open  
Front**  
Width 470mm  
4H411SOPU

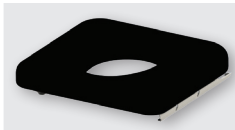
### Pressure Care



**Commode Seat Pressure Care -  
Black Side Open – Left**  
Width 470mm  
4H411SLPC



**Commode Seat Pressure Care -  
Black Side Open – Right**  
Width 470mm  
4H411SRPC

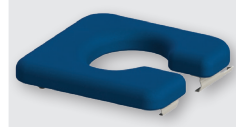


**Commode Seat Pressure Care -  
Black Closed Front**  
Width 470mm  
4H411SCPC

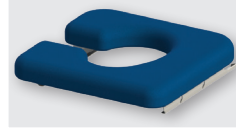


**Commode Seat Pressure Care -  
Black Open Front**  
Width 470mm  
4H411SOPC

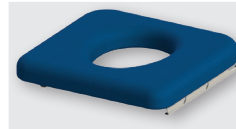
### Pressure Management



**Commode Seat  
Pressure Management - Blue  
Side Open - Left**  
Width 470mm  
4H411SLPM



**Commode Seat  
Pressure Management - Blue  
Side Open - Right**  
Width 470mm  
4H411SRPM



**Commode Seat  
Pressure Management - Blue  
Closed Front**  
Width 470mm  
4H411SCPM



**Commode Seat  
Pressure Management - Blue  
Open Front**  
Width 470mm  
4H411SOPM

CODE	DESCRIPTION
<b>WIDTH</b>	<b>550mm</b>
4H411SCPM55	Commode Seat Pressure Management Closed Front
4H411SOPM55	Commode Seat Pressure Management Open Front
4H411SLPM55	Commode Seat Pressure Management Side Open - Left
4H411SRPM55	Commode Seat Pressure Management Side Open - Right
<b>WIDTH</b>	<b>600mm</b>
4H411SCPM60	Commode Seat Pressure Management Closed Front
4H411SOPM60	Commode Seat Pressure Management Open Front
4H411SLPM60	Commode Seat Pressure Management Side Open - Left
4H411SRPM60	Commode Seat Pressure Management Side Open - Right

**All Shower Commode Seat Options include Pan Runners**



6 Welsh Place Landsdale WA 6065

Phone: (08) 9302 4757 Fax: (08) 9302 4524

Website: [www.4healthcare.com.au](http://www.4healthcare.com.au)

Email: [sales@4healthcare.com.au](mailto:sales@4healthcare.com.au)